

Recruiting Day Welcome

27 JANUARY 2017

NYU WIRELESS: Mission and Expertise

- ❑ Leading academic center in wireless communications
 - Solve problems for industry
 - Create leaders
 - Develop fundamental knowledge and new applications
- ❑ 20 faculty and 60 students on sponsored projects
 - Communications
 - Medical applications
 - Computing
- ❑ Current in force funding
 - Over \$10 Million/annually from NSF, NIH, and Corporate sponsors



Industrial Affiliates



Project Areas for FY17

Area	Pis
MmWave Channel modeling	Rappaport, Mezzavilla
Prototyping and simulation software	Rangan, Rappaport
Signal processing	Erkip
Cellular system design	Rangan, Panwar, Mezzavilla
High speed networking and applications	Subramaniam, Yao Wang, Yong Liu, Ramirez
Circuits and devices	Sharjerdi, Rakheja
Medical	Chris Collins
Total	

NSF Testbed Initiative

- ❑ NSF to spend \$400 Million in advancing 5G wireless
 - Significant focus on mmWave
- ❑ Goal to fund 4 to 5 key testbed sites
- ❑ NYU collaborating with NYC to become one key site
 - Strong industrial connections
 - Leader in mmWave and 5G in the US
 - Leverage NYC infrastructure, including Link NYC
- ❑ Testbed to showcase core technology + novel applications
 - NYU bid will focus on vehicular, smart cities, health, ...
- ❑ https://www.nsf.gov/news/news_summ.jsp?cntn_id=139179

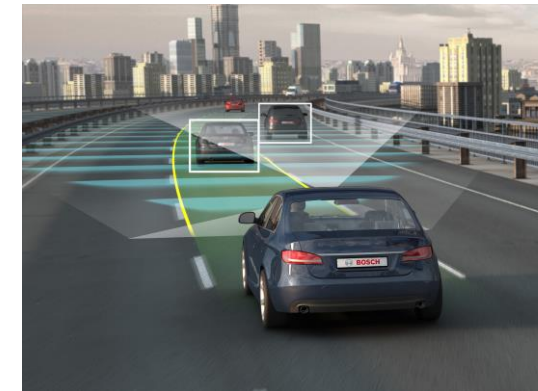


Research Directions FY2017

- ❑ Maintain deep research in core mmWave
 - Devices, channel models, system & network design
- ❑ Immersive / 360 video and augmented reality
 - Partners in NYU Game Center and NYU-X labs
- ❑ Vehicular technology
 - V2V and V2X
 - Automated driving
 - Seeking partnership with Toyota and others



NYU-X lab: <http://www.nyu-x.org/>



Agenda

11:00 a.m. - 11:20 a.m.

Welcome from the Director: Sundeep Rangan
Room 9.007

11:20 a.m. - 11:40 a.m.

Presentation from Edmund Yeh
Named Data Networking for 5G Wireless
Room 9.007

11:40 a.m. - 12:10 p.m.

Presentation from Winslow Burleson
Experiential Supercomputing: The NYU Holodeck
Room 9.007

12:10 p.m. - 1:30 p.m.

Buffet Lunch - NYU WIRELESS

1:30 p.m. - 2:30 p.m.

Student Poster Sessions, Demos, and Interviews

2:30 p.m. - 3:15 p.m.

Rogers Hall 637 Lab Tour

3:15 p.m. - 4:30 p.m.

Student Poster Sessions, Demos, and Interviews



NYU

TANDON SCHOOL
OF ENGINEERING